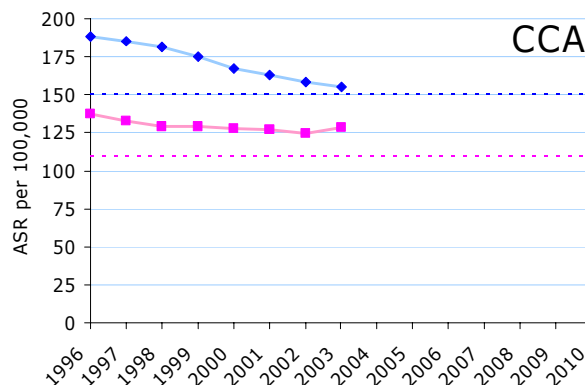
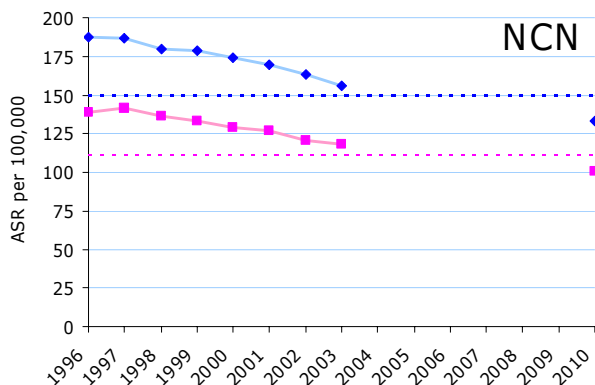


Overall trends in incidence and mortality

Projected mortality rates (ASR) for patients (aged under 75 years) to 2010 by Network

The graphs below show the observed age standardised rates up to 2004 and the predicted rates up to 2010 for all cancers (excluding non melanoma skin cancer) by cancer network and sex. The dashed lines indicate the target ASR for each sex.

Mortality (ASR) aged <75 years for all malignant tumours C00-C97 (excluding non-melanoma skin C44)



Northern Cancer Network (NCN)

In the NCN the observed rates in 2002-04 had reduced by 16.7% for males and 15.2% for females from the rates in 1995-97. By 2009-11 the rates were predicted to be 28.8% lower in males and 28.0% lower in females than those in 1995-97

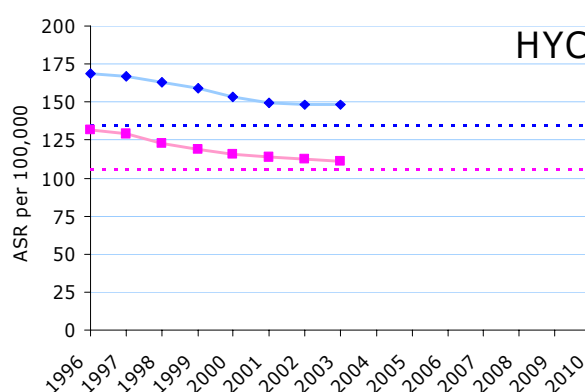
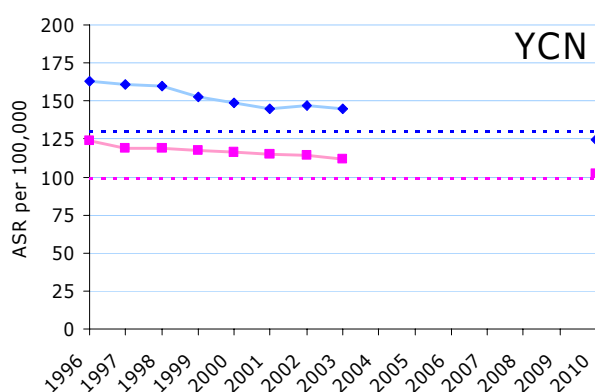
Cancer Care Alliance of Teesside, South Durham and North Yorkshire

For males in the CCA the observed rate in 2002-04 was 17.5% lower than the 1995-97 rate while the predicted rate in 2009-2011 was 33.5% lower than the 1995-97 rate. For females the reduction in the rate was less with the predicted rate in 2009-2011 estimated to be 15.6% lower than the 1995-97 rate, however if the last data point for females was excluded then the predicted rate in 2009-2011 would be 19.3% lower. (Across the period 1995-97 to 2002-04 there is a clear downward trend for females with the exception of the last point, 2002-04).

Legend for all charts on this page

—◆— Males	—■— Females
—◆— Male Projected	—■— Female Projected
—●— Male Target	—●— Female Target

Mortality (ASR) aged <75 years for all malignant tumours C00-C97 (excluding non-melanoma skin C44)



Yorkshire Cancer Network (YCN)

For males in the YCN the observed rate in 2002-04 had reduced by 10.9% from the rate in 1995-97 and by 2009-2011 the rate was predicted to be 23.7% lower than the rate in 1995-97. For females the rate in 2002-04 was 9.8% lower than the rate in 1995-97 and by 2009-2011 the rate was predicted to be 17.4% lower than the 1995-97 rate.

Humber and Yorkshire Coast Cancer Network (HYC)

In the HYC the observed rates in 2002-04 had reduced by 12.4% for males and 15.9% for females from the rates in 1995-97. By 2009-11 the rates were predicted to be 25.6% lower in males and 29.8% lower in females than those in 1995-97